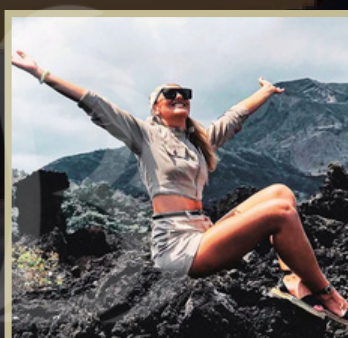


# MOUNT BATUR Jeep Tour



## MT. BATUR JEEP TOUR PACKAGE



### 1. Sunrise Jeep Tour

Travel on a jeep to explore Mount Batur and catch the sunrise. Mount Batur is still an active volcano, with the most recent eruption being in 2000. This activity includes a light breakfast at the top of Mount Batur.

### 2. Black Lava

You will visit Black Lava. The substantial lava field from the 1963 eruption is visible today when viewed from Kintamani.

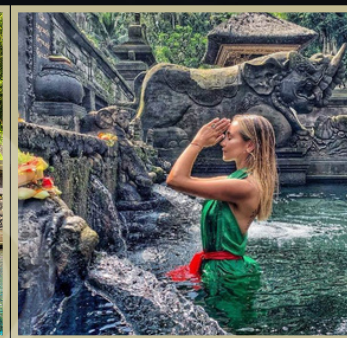


### 3. AKASA Speciality Coffee

This trendy cafe in Kintamani (Bali) lets you enjoy magical views of Mt. Batur!

### or Luwak Coffee Plantation

Experience the true taste of Indonesian Luwak coffee. You will get to taste various types of coffee and tea.



### 4. Tirta Empul Temple

Tirta Empul is a temple considered sacred by Balinese Hindu community. The temple has several holy springs which are said to have been created by The God Indra and believed to be blessed water that could purify those who bathe there.

#### CONTACT US



info@beyondbali.tours



+62 822-6631-1722



+62 821-4411-1515



@beyondbali.tours



www.beyondbali.tours

# Trip Itinerary

3:30	Pickup from hotel
4:45	Start the jeep tour
6:00	Enjoy sunrise at Mt. Batur
7:00	Black Lava field
9:00	Akasa cafe or Luwak coffee plantation
11:00	Tirta Empul Temple
13:00	Go back to hotel
End of the program.	

## This Trip Included :

- Hotel pick up & drop with private car and English speaking driver.
- Private jeep for Mt, Batur sunrise watching.
- Light breakfast.
- Entrance to Mt. Batur area.
- Entrance to Tirta Empul temple.
- Visit Black Lava, Akasa cafe or Luwak coffee plantation.
- Mineral water.

## Excluded :

- Purification at Tirta Empul temple.
- Extra personal expenses.
- Services and activities not mentioned in the itinerary.
- Any meal or spend in resto or beach club.

\*What to wear : Any comfortable clothes.

\*What to bring : Jacket, sunscreen, any personal needs.

## Mt Batur Jeep Tour Package Price :

1 Person	IDR 2.000.000 / Pax
2 Person	IDR 1.250.000 / Pax
3 Person	IDR 1.100.000 / Pax
4 Person	IDR 1.000.000 / Pax
5 Person	IDR 850.000 / Pax

- Prices are per person.
- Extra 100.000 IDR for pickup & drop at Jimbaran, Uluwatu, Nusa Dua.

Please contact our team for more information.

## CONTACT US



info@beyondbali.tours



+62 822-6631-1722



+62 821-4411-1515



@beyondbalitours



www.beyondbali.tours



- All timing above is flexible and might be changed anytime.
- Please contact our team for customize the tours.

## Important Pricing Details :

- Prices : Prices are per person.
- Food & Beverages : Prices are not included spend at any resto/cafe/beach club.
- Hotel Transfers : Prices are included hotel transfer. For pick up that more than 40km from the first destinations, will be charged for extra fee.
- Currency : All payments must be made in Indonesian Rupiah (IDR).
- Bank Charges : Prices do not include bank charges that may apply for certain payment methods.

## Important Booking Policies

### Full Payment :

- Required in advance for multiple tours.
- Full payment required if you book 0–48 hours before the tour.
- 50% down payment is required for advance bookings.
- Payment must be completed at least 48 hours before the tour.

### Cancellation Policy :

- 48+ hours before the activity : 100% refundable (Situational).
- 24–48 hours before the activity : 50% refundable (Situational).
- Within 24 hours of the activity : Non-refundable (Situational).

### Rescheduling :

Available upon request for specific activities. Please inform us as early as possible.

## Payment Method :

You can do payment with bank transfer or payment link.

- |                                  |                                   |
|----------------------------------|-----------------------------------|
| • Bank Transfer :                | • Dubai Bank :                    |
| Account Number : 7703010999      | Account Number : 3707608787501    |
| Account Name : Ahmad Alfaor      | Account Name : Maan Al Faour      |
| Bank : BCA (Bank Central Asia)   | Bank Name : Emirates Islamic Bank |
| Email : info@beyondbali.tours    | IBAN : AE420340003707608787501    |
| Address : Jalan Dewi Sri I No.20 |                                   |
| City : Kabupaten Badung          |                                   |
| Province : Bali                  |                                   |
| Post code : 80361                |                                   |

(Guest can do international bank transfer using wise, remitly, xendit, etc)

- Payment Link :  
A 3% card processing fee will be applied.  
Please notify us through WhatsApp when you're ready to pay and we will send the payment link.

Please Contact Our Team For More

CONTACT US



info@beyondbali.tours



+62 822-6631-1722



+62 821-4411-1515



@beyondbalitours



www.beyondbali.tours